

Working in Downtown's
CIBC BUILDING

It's a breeze...

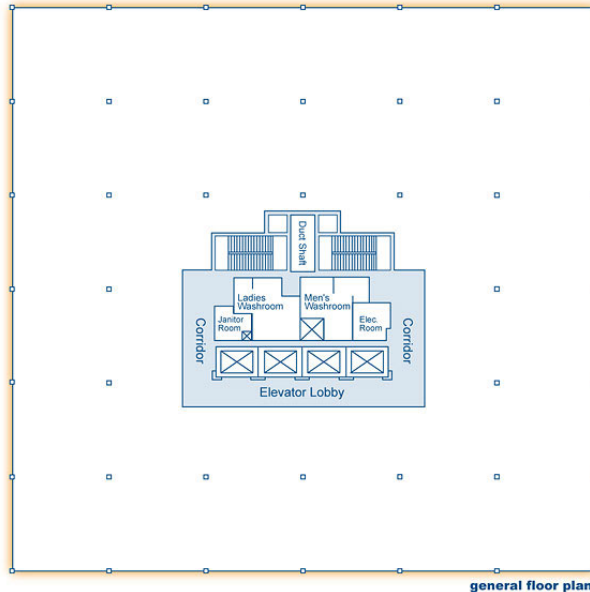


With spectacular harbour and historic district views from your office in the CIBC Building, you may forget that you're working. Pedway access to hotels, shopping, dining, and entertainment ensures benefits and perks for employees and clients alike.



CIBC BUILDING

From the bright and spacious new lobby to exceptional harbour and historic district views, the CIBC Building is 16 floors of prestige office space. Connected by interior pedways to three hotels, shopping malls and the waterfront, the CIBC Building is located in the center of the downtown business district.



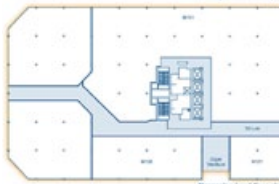
general floor plan



Barrington level floor plan



Granville level floor plan



Massena level floor plan

Specifications

Size:

- 206,159 square feet on 16 floors
- 13,292 square feet per typical floor

Climate Control:

- Complete H.V.A.C. system with humidification system
- New Smardt Chiller installed in 2010
- Heating provided by two dual fired (natural gas and light oil) boilers, one high efficiency Viessmann and one Smith cast iron boiler

Elevators:

- Four high speed Dover elevators

Fire Safety:

- New Simplex 4100U fire panel
- Alarm system rings into Crombie's security control room
- Fan pressurized stairwells

Security:

- In-house security patrols 24 hours a day, 7 days a week.
- 66 C.C.T.V. cameras throughout the complex
- New Chubb-Lenel OnGuard Proximity Card Access system

Parking:

- Indoor access to 1,700 vehicle parkade

Loading Bay:

- Entrance on Granville street

Accessibility:

- Barrier-free access
- Unisex barrier-free washrooms

Amenities:

- Deli at Granville street entrance
- Direct access to shopping, food court, first-class hotels, daycare, convention centre, casino and entertainment

The CIBC building is recognized for excellence in environmental management and performance by the prestigious BOMA BEST group.